

# ACTIVE CHILLED BEAMS

**ACB4L** (2 WAY)

**ACB5L** (1 WAY)

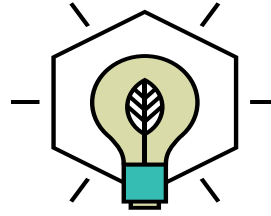


**DADANCO**

feel the difference™



# BUILT ON INNOVATION



**THE ULTRA SLIM** ACB4L /5L has an ultra slim profile with a height of only 6.8". The slim profile utilizes DADANCO's unique nozzle and fluid dynamics technology providing the most energy efficient thermal comfort.

## PRODUCT DATA AND PERFORMANCE

**Discharge** ACB4L is 1-way and ACB5L is 2-way

**Primary Air Flow** available with multiple air connections to handle higher primary air flows at low room sound levels

**Cooling** 1,000-8,000 BTUH

**Coil** available in 2 or 4 pipe

**Connections** 4" round connections are standard Larger flat oval connections are available to accommodate higher primary air flows

## COMMON APPLICATIONS

The low height **Active Chilled Beams** are suitable for buildings with severely restricted interstitial space. Renovations of buildings with floor mounted air conditioning units such as fan coils or perimeter induction units can benefit from an overhead chilled beam system by freeing up floor space along the perimeter.





# ACB4 L/5L

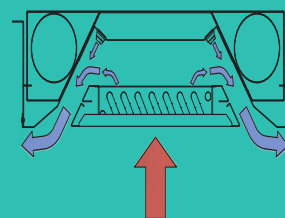


## LOW HEIGHT ACTIVE CHILLED BEAMS

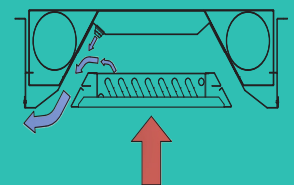
### ULTRA SLIM PROFILE

Engineered to fit into a standard 24" ceiling grid with options suitable for use in 9/16" or 15/16" T-bar. With an ultra slim design for concealed installation into buildings with severely restricted interstitial space, DADANCO's nozzle technology provides superior performance delivered at the lowest possible noise levels.

ACB4L



ACB5L



### PERFORMANCE CHARACTERISTICS

MODEL	SIZE		TYPICAL CAPACITY			SOUND LEVEL
	Width	Height	Cooling (BTUH)	Heating (BTUH)	Primary Airflow (CFM)	
ACB4L	24"	6.8"	1,000-8,000	10,000	15 - 140	NC15-NC35
ACB5L	24"	6.8"	1,000-8,000	8,000	15 - 14030	NC15-NC35





The Luxton-Reed Center  
47 Westfield Industrial Park Road  
Westfield, Massachusetts 01085

(413) 564-5657  
[info@dadanco.com](mailto:info@dadanco.com)

 Dadanco

 DadancoHVAC

 Dadanco

[WWW.DADANCO.COM](http://WWW.DADANCO.COM)

